

In the Comfort of Your Home

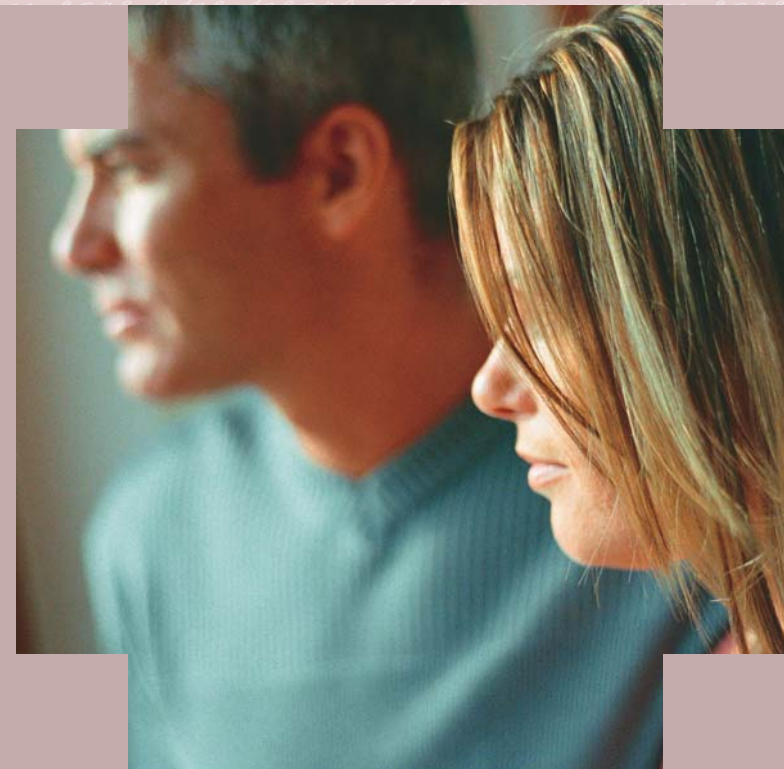
Hospice is not a place, but a concept of care. Whenever possible, hospice care is offered at home. Care provided in the home allows patients to live their final days to the fullest, surrounded by their loved ones. Families can be together when it means the most, supporting the patient's final days with peace, comfort, and dignity.

Typically, a family member serves as the primary caregiver and, when appropriate, helps make decisions for the patient. Members of the Hospice Care staff make regular visits to assess the patient and provide additional care. Hospice staff is on-call 24 hours a day, seven days a week.

Livingston HealthCare includes:

- **A** Livingston Memorial Hospital
- **A** Home Oxygen
- **B** Orthopedic and Rehabilitation Institute
- **C** Park Clinic (River Drive)
- **D** Park Clinic (West Crawford)
- **E** Home Care and Hospice Care
- Sleep Center, 1429 West Montana

Since 1955, Livingston HealthCare has provided premier-quality healthcare to the residents of Park County and surrounding communities. We keep our community healthy with a broad scope of services provided by well-trained and highly-skilled professionals. At Livingston HealthCare, we believe that **the way we care** is as important as the healthcare services we provide. That's why we like to say that we're more than just healthcare. We're really **the heart of community care.**



LivingstonHealthCare

504 South 13th Street • Livingston, Montana 59047

Phone: (406) 222-3541 • Fax: (406) 823-6499

www.livingstonhealthcare.org



Hospice Care

Member of Livingston HealthCare

For your health, our campus is tobacco free.

What is Hospice Care?

Hospice Care focuses on caring, not curing. When a cure is no longer possible, hospice provides the best in medical, nursing, emotional, and spiritual care for people facing life-threatening illness and shortened life expectancy. A team of professionals and trained volunteers works together to support the patient and his/her family in meeting the special needs that accompany the final stages of illness and dying. Hospice Care does not end with the death of a patient, but continues with support for the family through bereavement.

Hospice Care Team Members

- Nurses and Aides
- Physician
- Chaplain
- Medical Social Worker
- Trained Volunteers
- Bereavement Counselor

Hospice Care allows families to be together, supporting the patient's final days in peace, comfort, and dignity.



Hospice Care Services

- Manage patient's pain and symptoms
- Assist patient with emotional and spiritual aspects of dying
- Provide needed drugs, medical supplies, and equipment
- Coach family on how to care for patient
- Arrange special therapies, when needed
- Offer social work and counseling
- Make short-term inpatient care available when pain or symptoms become too difficult to manage at home, or caregiver needs respite time
- Provide bereavement care and counseling to surviving family and friends

Patient Criteria

Hospice Care is arranged when the patient, family, and physician have determined that curative therapy is no longer appropriate and they desire palliative care. Hospice Care is available for Park County residents with a confirmed terminal diagnosis and life expectancy of less than six months.

Patient Billing

Most health insurance companies, including Medicare, cover services provided by Hospice Care. At your request, our business office would be happy to verify your insurance coverage for you.

contact us

For More Information

Please talk with your physician
or call **406-823-6430**.