

PPRNet HIGHLIGHTS

- PPRNet was founded in 1995 in a joint effort between the Medical University of SC and Physician Micro Systems, Inc.
- PPRNet is the first practice-based research network linking physicians who use electronic medical records.
- Since the year 2000, PPRNet has secured more than \$3.1 million in research funding.
- PPRNet has a current membership of 88 primary care practices; our goal is to have more than 100 practices by 2005.
- PPRNet holds an annual Research Network Meeting, with CME credit hours available to participants. Research funding supports participation in these meetings by PPRNet members.
- PPRNet has published over 23 peer review articles. Members are frequently co-authors.
- The current PPRNet database includes clinical data on more than 855,000 patients in participating practices



“The TRIP study is the best I’ve participated in and has had very positive effects on my practice habits.”

Contact us to find out how you may become a part of the future of PPRNet

Practice Partner Research Network

Medical University of SC
Department of Family Medicine
295 Calhoun Street
Charleston, SC 29425
(843) 876-1212 voice
(843) 876-1211 fax
Internet: PPRNet@musc.edu
WWW.musc.edu/PPRNet

PPRNet Staff

Steve Ornstein, M.D.
PPRNet Director
Associate Professor
Ornstesm@musc.edu

Ruth Jenkins, M.S.
PPRNet Research Associate
Jenkinsr@musc.edu

Loraine Roylance
PPRNet Coordinator
Roylanlf@musc.edu

PPRNet Consultants

Sarah Corley, M.D.
DrCorley@InternalMedicineAssoc.com

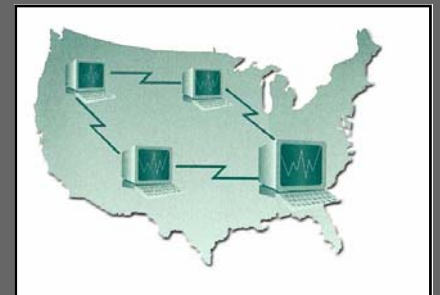
Andrea Wessell, Pharm D
wessell@musc.edu

Chris Feifer, DrPH
feifer@hsc.usc.edu

Practice Partner Research Network (PPRNet) 1995-2005



PPRNet is a practice-based learning and research organization designed to improve health care in its member practices and elsewhere in the U.S.



What is PPRNet

Established in 1995, the Practice Partner Research Network (PPRNet) is a collaborative effort between the Medical University of South Carolina, Physician Micro Systems (PMSI), and participating practices across the United States. PPRNet is a unique and exciting practice-based research network. It is the only practice-based research network in the United



2004 Annual Investigators Meeting—Seattle, WA

States linking physicians who use electronic medical records (EMRs). A longitudinal patient data-base comprised from practices throughout the United States provides the basis for PPRNet's research activities. PPRNet's design protects the confidentiality of patients and physicians and requires **minimal** time commitment for busy physicians.

ONGOING PPRNET PROJECTS **ACCELERATING TRANSLATING** **RESEARCH INTO PRACTICE (A-TRIP)** **SEPT 2002-SEPT 2006**

The A-TRIP study is funded by the Agency for Healthcare Research and Quality (AHRQ) as part of its Partnerships for Quality Initiative. A-TRIP is a demonstration project, employing a quality improvement model developed in earlier PPRNet research in up to 100 primary care practices for 80 clinical practice guidelines. Benefits for participating practices include quarterly practice reports, support to attend an annual meeting, and the opportunity to host practice site visits from project faculty.

Quarterly practice reports showing performance on indicators of care for cardiovascular disease, diabetes, cancer screening, immunization, respiratory illness, mental health care, nutrition/obesity, and medication use in the elderly. Reports include PPRNet and national benchmarks for these indicators.

Network meetings are usually held each July in Seattle, WA., concurrent with the PMSI User's Group Meeting. Grant support funds help support the attendance by A-TRIP physician and staff members. Meeting activities are designed to share "best practice" approaches to improving patient care. Small group work shops where clinicians, nurses, and office staff meet to exchange useful approaches in their practices are an important component of the meetings.

Finally, A-TRIP provides practices the opportunity to host periodic site visits, aimed at highlighting successful improvements and opportunities for future improvements in your practice. Sites can also access between-visit e-mail/telephone support from the project team.

DIRECT TO CONSUMER ADVERTISING **(DTCA) ON DRUG PRESCRIBING** **JUNE 2003-MAY 2005**

This project, conducted by Dr. David Bradford and others at the MUSC Center for Health Economic and Policy Studies is using PPRNet and other data sets to assess the impact of DTCA on prescribing for osteoarthritis and dyslipidemias. One study is being funded by AHRQ; additional funding is anticipated from the NIH National Heart, Lung, and Blood Institute.

ALCOHOL SCREENING OF **HYPERTENSIVE PATIENTS** **SEPT 2004-SEPT 2007**

This project will be conducted by PPRNet in a collaborative effort with Drs. Peter Miller and Raymond Anton of the Department of Psychiatry and Behavioral Sciences at MUSC. The project, an "add-on" to the A-TRIP project, is intended to test an intervention designed to improve detection and management of problem drinking and alcoholism among primary care patients with hypertension.

FUTURE PPRNET PROJECTS

PPRNet has recently submitted an application to the NIH National Cancer Institute to test an intervention designed to improve colorectal cancer screening is currently applying to other. Dr. Bradford has submitted an application to the NIH National Institute of Mental Health to further study DTCA for mental health problems..

PPRNet also actively solicits research ideas from its member practices.